The advertisement features a black EIKI EX-3000-N projector as the central focus. The projector is shown from a three-quarter front view, with a blue beam of light emanating from its lens. The background is a warm, reddish-brown color. Two large, semi-transparent blue film reels are positioned behind the projector, one on the left and one on the right. The EIKI logo is prominently displayed in white on the top left of the projector's body. The overall aesthetic is professional and technical.

EIKI

16MM SOUND PROJECTORS

EX-3000-N

Auditorium power Portable Xenon projector

1700 Lumens

EIKI

EX-3000N

FEATURE ATTRACTIONS

- *Super-powerful, long-lasting Xenon lamp.
- *Solid-state components reduce weight, increase reliability.
- *Modular construction cuts downtime dramatically.
- *Silent self-threading.
- *Switching regulator type power supply.
- *Lamp may be operated in either FULL or HALF position depending upon illumination requirement.

SPECIFICATIONS

POWER SOURCE: Universal voltage: 110, 120, 220, 240V.

LAMP: 350W ozone-free Xenon lamp

EXCITER LAMP: 4V-0.75A, BRK.

STANDARD LENS: 50mm (2") f/1.2, 6-element, coated, with micro-focusing.

CINEMASCOPE LENS

HOLDER: Standard equipment

SHUTTER: 2 blade.

CONSTRUCTION: Modular.

MOTOR: Induction, with capacitor (plug-in module).

FILM SPEED: 24 and 18 fps, sound and silent, forward, reverse and stop (with no projection).

LOOP RESTORER: Automatic.

CONTROL SWITCH: Single rotary lockout switch for forward, reverse and lamp on/off.

REWIND: High speed. No reel or arm change required.

REEL CAPACITY: 2000 ft.

SPEAKER: One 8" speaker built into removable front cover, with 65' speaker cord. Separate 2-way speaker with 12" bass and 6.5" treble also available.

SOUND: Optical and magnetic.

AMPLIFIER: Solid state (plug-in module). 20W RMS continuous undistorted, 27W peak.

Power supply: Switching regulator type.

TONE CONTROLS: Separate treble and bass; +20dB on each.

STEADINESS: Wow 0.2% flutter 0.2%

SIZE: 345 x 290 x 355mm

WEIGHT: 21 KGS (46 pounds)

EACH PROJECTOR

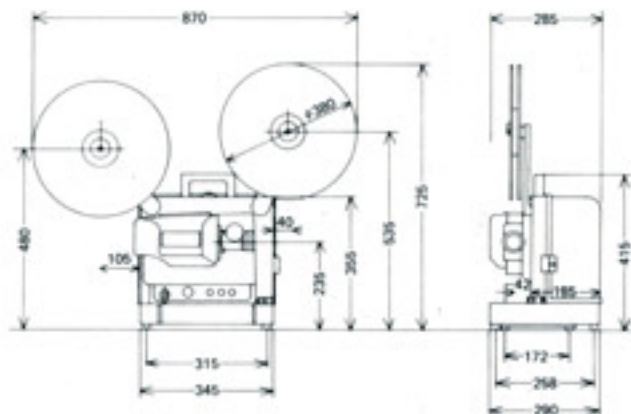
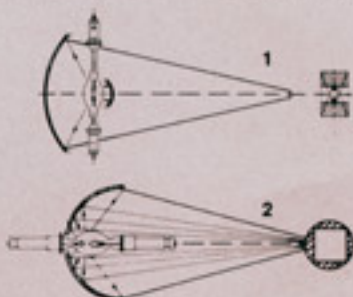
IS SUPPLIED WITH: Vinyl dust cover, cleaning kit, 9" power cord and 2000' Eiki-matic take-up reel.

EIKI XENON LAMPS ARE SUPERIOR BY DESIGN

In the past, most reflector designs have been similar to that shown in figure 1. Two reflectors are required, and the light is concentrated in a vertical, rectangular shape, so that only a small part of it is usable for the horizontal film frame.

The Eiki design is illustrated in figure 2. A single, high efficiency parabolic reflector concentrates the light from the horizontal lamp in a perfect conical shape, permitting maximum utilization of light.

An Eiki Xenon lamp in the horizontal position can produce 50% more light than the same wattage lamp in the vertical position.



AUTHORIZED EIKI DISTRIBUTORS.

EIKI

When the show must go on.

EIKI INDUSTRIAL CO., LTD.

C.P.O. Box 1229, Osaka, 530-91, Japan

EIKI INTERNATIONAL, INC.

27882 Camino Capistrano, Laguna Niguel, CA. 92677 U.S.A.