

## COMPACT MACHINE SPECIFICATION

### DRYING CABINET AND CONTROL PANEL

Stainless steel construction  
 Impinged air drying  
 Automatic temperature control  
 Manual humidity control  
 Filtered input air  
 Access doors both sides  
 Stop/start buttons for machine drive

### FEED-OUT ELEVATOR

Stainless steel construction  
 1 minute minimum change over time  
 Machine pacer controlled by mechanical clutch  
 All spools ball-raced

### TAKE-UP UNIT

Stainless steel construction  
 Torque motor take-up controlled by elevator position  
 Non-return roller  
 Take-up On/Off switch  
 Variable speed main drive motor (Thyristor Control)

### CHEMICAL CONTROL UNIT

Stainless steel construction  
 Magnetic drive pumps  
 Proportional temperature control solid state, triac output with temperature deviation lights  
 Circulation, filtration and temperature control of all solutions  
 Overheat protection for heat exchangers  
 Heating by removable cartridge heaters  
 Sample taps for all solutions

### REPLENISHER UNIT

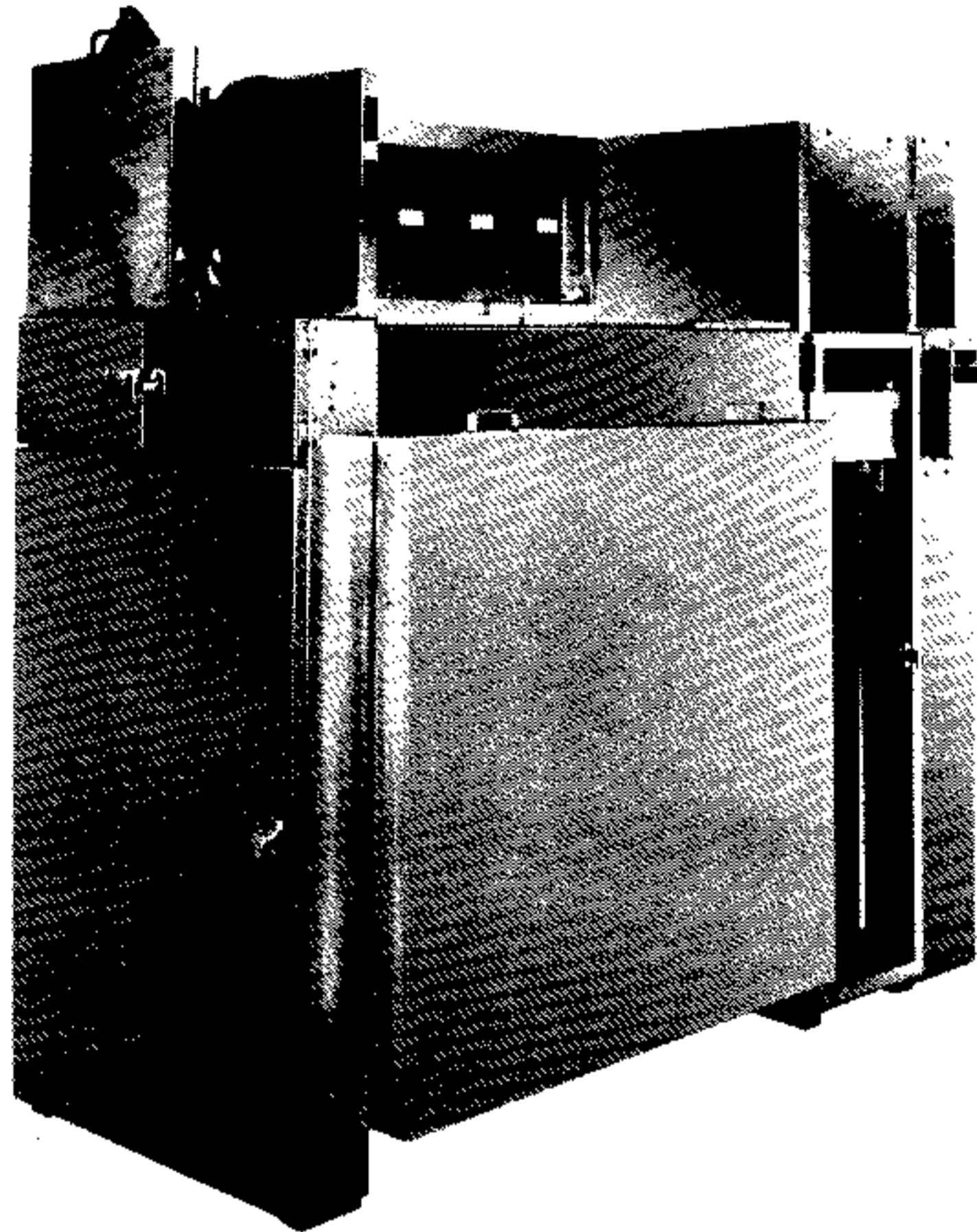
Stainless steel construction  
 Metering pumps or flowmeter as desired

### SOUND TRACK APPLICATOR

Anodised aluminium main plate  
 Stainless steel bearings  
 Film drive  
 Adjustable wiper blades  
 Adjustable comb  
 Quick lift off arm  
 Micrometer adjustment for bead  
 Single or twin heads  
 Chicken feed solution system

# CALDER EQUIPMENT LIMITED

BATFORD MILL  
LOWER LUTON ROAD  
HARPENDEN HERTFORDSHIRE AL5 5BZ  
TELEPHONE: HARPENDEN (01582) 764331  
FAX No: (01582) 761526



## COMPACT MACHINE SPECIFICATION

DESIGNED AND BUILT TO SUIT ANY  
FILM STOCK FORMAT OR SPEED,  
AND TO SUIT INDIVIDUAL CUSTOMER'S  
REQUIREMENTS.

## GENERAL SPECIFICATION

Stainless steel construction throughout (EN58J)  
or titanium where necessary  
Demand Friction drive  
Spring centred spools  
Circuit breakers throughout for protection  
All idler spools ball-raced  
Film retainers on all lower spools  
Simple in design, construction and maintenance

## CASSETTES

Stainless steel construction  
1200 ft capacity  
Rotation indicator

## CASSETTE MOUNTING UNIT AND FEED-ON ELEVATOR

Stainless steel construction  
Leader dispenser  
Film end detector  
Stop/Start for machine drive  
Start/Stop for input pacer  
Warning light panel  
Elevator position panel light  
Alarm cut-out button  
1 minute minimum change-over time  
Input pacer (controlled by elevator position)  
Film break warning device  
Elevator rise warning  
Machine cut-out switch  
All spools ball-raced

## WET SECTION

Removable film racks  
Stainless steel tanks or titanium where necessary  
Winthane wipers between process stages (combination  
fixed/sprung)  
Backing removal unit — 2 stage — rinse/buff  
Wash flow solenoid actuated by the main drive  
Vacuum squeegee prior to dryer

# CALDER EQUIPMENT LIMITED

BATFORD MILL  
LOWER LUTON ROAD  
HARPENDEN HERTFORDSHIRE AL5 5BZ  
TELEPHONE HARPENDEN (0582) 764331/2  
TELEFAX 827684 CECIL G. FAX: No. (0582) 761526



January 1991/15

## COMPACT MACHINE RANGE OPTIONS AND OPTIONAL EXTRAS (PHOTOFINISHING MACHINES)

### GENERAL

Diablo spools or flatbed with soft touch tyres  
Daylight or darkroom loading

### CASSETTES

Reel or core type

### CASSETTE MOUNTING UNIT

Input pacer cutout on joining box door

### FEED-IN ELEVATOR

Soft start for input pacer  
Leader dispenser above elevator  
Alarms on doors

### WET SECTION

Additional counter current wash tanks  
Counter current fix tanks  
Submerged loops in developer  
Additional bleach time  
Alarms on lids  
Perspex lids on light section  
Titanium tank top sections  
Rotary buffer or vacuum squeegee  
If vacuum, airmover or vacuum pump  
Vacuum head (airmover after fix)

### TAKE-UP UNIT

Reels or cores  
Metre counter  
Hours counter  
Soft start facility

### MAIN DRIVE

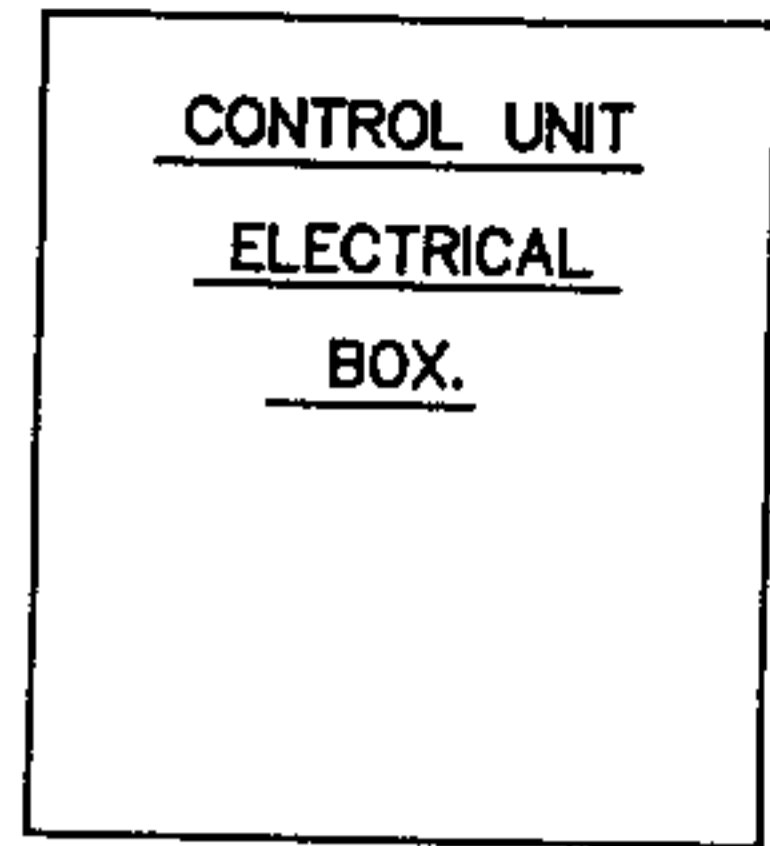
Hand crank facility  
Digital speed indicator

### CHEMICAL CONTROL UNIT

Temperature indicators  
Digital temperature controllers & indicators  
Independent temperature monitoring unit  
Time Clock  
High speed warm-up  
Circulation failure warning system  
Independent pump for developer agitation

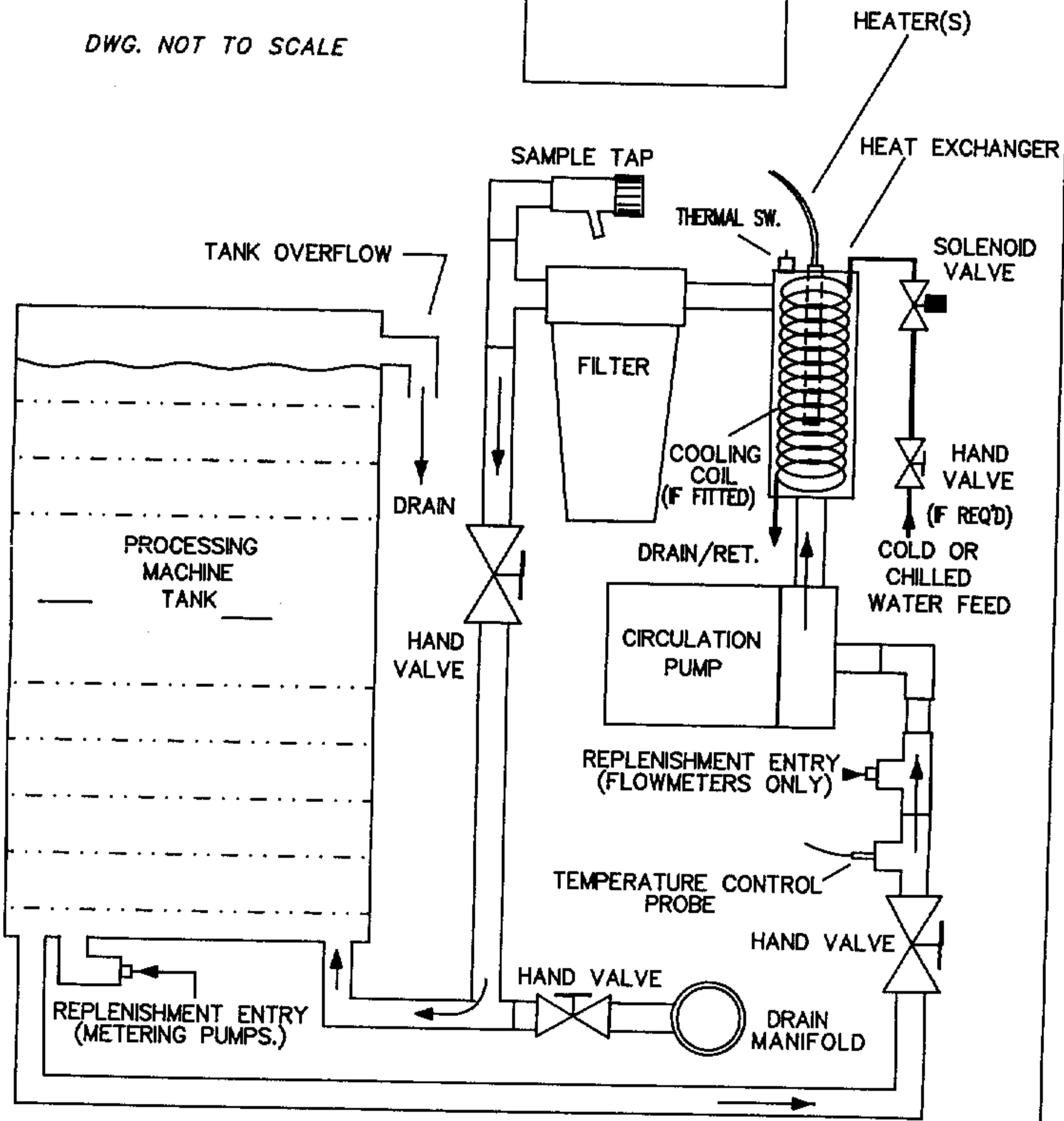
### REPLENISHER UNIT

Metering pumps or flowmeters  
Standard or automated  
Bleach and fix collector units



FRONT →

DWG. NOT TO SCALE



COMPACT CHEMICAL CONTROL UNIT & CIRCULATION SCHEMATIC.