

INTRODUCTION TO THE **01-series** REWINDER



ST 2520

ST2520-film rewinder

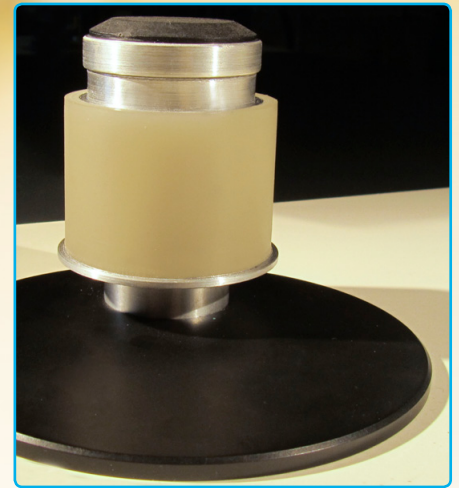
- Single motor drive system for fully variable wind speed.
- Easy handling by hand or foot control (option ST2259)
- Very slow speed for inspection film perforation, damages, cutting/ editing and cleaning film purposes.
- Fast winding of 16 and 35mm picture / sound film and 17,5mm sound film in A-wind in both directions.
- Universal counter (option ST2258): accurate counting using optional processor counter for 16 / 17,5 and 35mm film or PE film using film driven sprockets, or without sprockets for checking measurements of film length of shrunken or damaged material with and accuracy of less than 0,5%.
- Small and easily moveable chassis.
- Solvent resistant table top with enough space to work for the operator.
- Take-up assemblies for 600 meter / 2000 feet film on (16mm) spools or bobbins or 1000 meter of PE sound film.
- Take-ups with film plates to accept bobbins according to DIN 15531 and 16m reels according to DIN 15621.
- Illuminated ground glass for controlling individual frames.
- Fast and sensitive film transport in both directions.
- Automatic stop at film end or when film breaks with warning signal by buzzer.
- Dimmer with socket is installed for working lamp (max. 75 watt).
- Working lamp optional.
- Installed is standard an elapsed hour counter for maintenance.
- Transport castors with brakes.

Technical data

- The maximum speed range is available in both directions.
- Fully variable rewinding speed of max. 5 meters per second. (EU regulation). This is for 600 meters / 2000 feet of film is approx. 3 minutes.
- Adjustable film tension of the frictions remains steady over full film length.



Overview with counter accessories



ST2660

Power requirements: 220 / 240 Volts – 50 / 60 Hz.

On request: 110 / 110 Volts – 50 / 60 Hz.

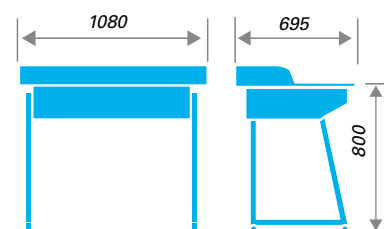
Power consumption: approx. 600 watt.

Table size: width 107cm – depth 70cm – height (bench) 81cm – (height incl. counter 97cm)

Weight: approx. 60 kg.

Options

ST58	Table working lamp
ST2258	Electronic universal processor counter including sprockets for (S)16 – 17,5 – 35mm
ST2259	Foot switch / control
ST2260	Sprocketless counter roller for ST2258



Weight: 60 kg. Measurement in mm.

More than 60 years of film table precision



Keizersveld 31
5803 AM Venray (Holland)
Email: info@steenbeck.com

Tel.: + 31 (0) 478 630300
Fax: + 31 (0) 478 690007
www.steenbeck.com