

# INTRODUCTION TO THE **New Line** REWINDER



**ST 2525**

## ST2525-film rewinder

- Single motor drive system for fully variable wind speed.
- A-wind in both directions.
- Maximum speed of 6 meters / 20 feet per second is available in either direction. A roll of 600 meters/2000 feet takes about 2 minutes to wind.
- Adjustable wind tensions.
- Maximum capacity of 600 meter / 2000 feet of Acetate film on bobbins or 16mm spools, or 1000 meter / 3000 feet of PE film.
- Spacious work area.
- Machine fitted with casters for easy movement.
- Rear castors fitted with brakes for operational stability.
- Easy operation by hand control or optional foot control.
- Variable speed providing very low speed, ideal for inspection of film perforation, damages, joins and for cleaning purposes.
- Fast and sensitive winding of 16mm, Super16, 35mm film picture / sound film and 17,5mm magnetic sound film.



- Accurate counting using optional electronic universal processor counter of 16, 17,5 and 35 mm film or PE film using film driven sprockets, or without sprockets for checking measurements of film length of shrunken or damaged material with an accuracy of less than 0,5%
- Large ground glass back-illuminated (LED) by a 7000° K (approx) light source.
- Automatic stop at film end or when film breaks with warning signal by buzzer.
- Two shelves with integrated switchboard, dimmable LED work light and optional processor counter.
- Elapsed hour counter fitted as standard for maintenance purposes.
- All guide rollers fitted with ball bearings for extended life.



### Technical data

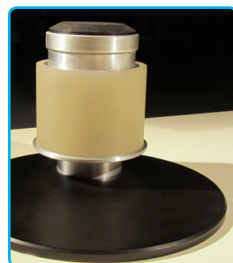
Power requirements: 220 / 240 Volts – 50 / 60 Hz.  
 On request: 110 / 110 Volts – 50 / 60 Hz.  
 Power consumption: approx. 600 watt.  
 Table size: width 118cm – depth 79,5cm – height (bench) 80cm – (height shelf 135cm)  
 Weight: approx. 100 kg.

### Options

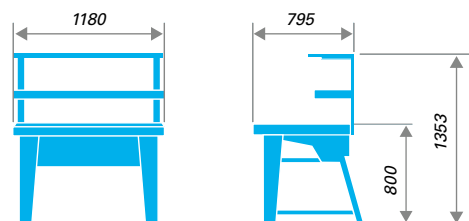
<b>ST2258</b>	Electronic universal processor counter including sprockets for (S)16 – 17,5 – 35mm
<b>ST2259</b>	Foot switch / control
<b>ST2260</b>	Sprocketless counter roller for ST2258



Special multi format guide roller



ST2260



Weight: ca. 100 kg. Measurement in mm.

## More than 60 years of film table precision